

Shark Hand Puppet



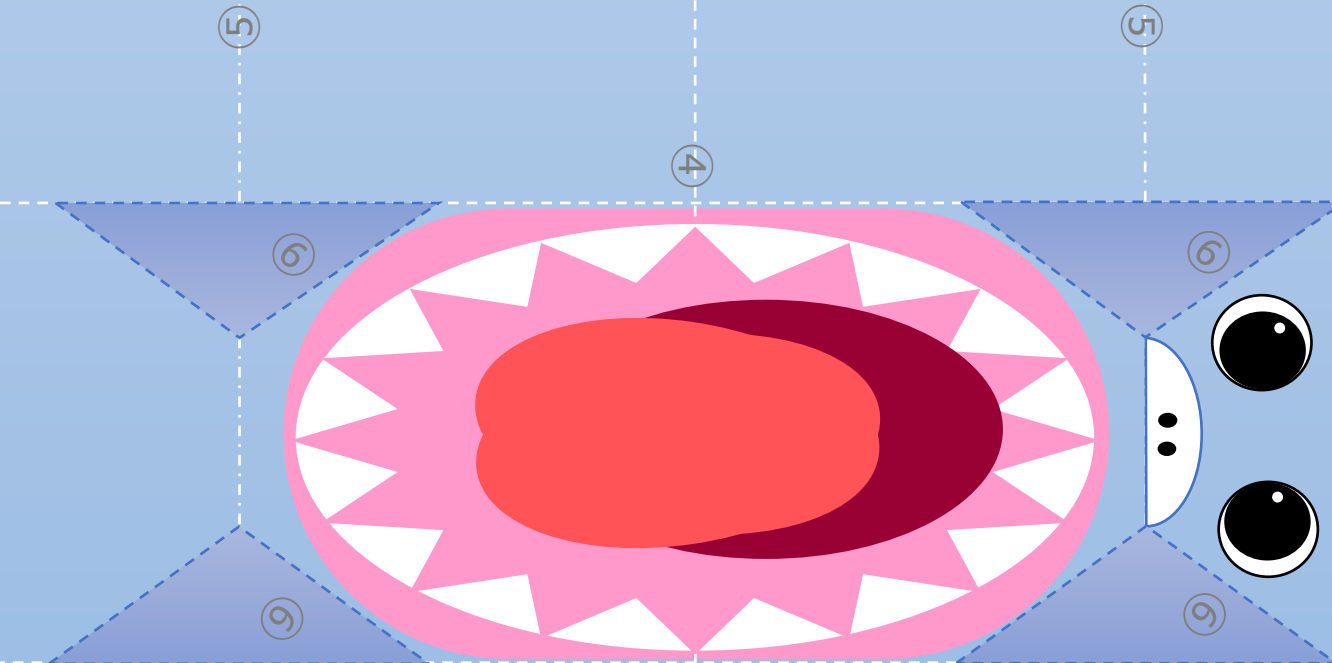
⑧ Attach c ↓



③ Glue Here

⑦ Attach a

⑦ Attach b



⑦ Glue b

⑧ Glue c

⑦ Glue a

③ Glue Here



©Rhymoe 2021

Shark Hand Puppet 作り方

1. ①②の線をそれぞれ山折り
2. “③Glue Here”の文字部分（2か所）にのりを塗る
3. ①の面に②の面をのりづけする
4. ④の線を山折り
5. ⑤の線で2つの方向で谷折りにし、全体がWの形になるようにする。
6. ⑥の四角（4か所）は両側に山折りして折り目をつけて、内側に折り込む。
7. ひれa、b、cを切り取る。
8. “⑦Glue a” “⑦Glue b”部分にのりをつけ、それぞれ“⑦Attach a” “⑦Attach b”にひれを貼る。
9. ひれcは線のところで谷折りにし、“⑧Glue C”部分にのりをつけ、目の後ろ側“⑧Attach c↑”部分に裏から貼る。

Shark Hand Puppet Instruction

1. Fold each of the lines in ① and ②.
2. Apply glue to the letters "Glue Here" (2 places).
3. Glue the side (2) to the side (1).
4. Fold the lines (④) upward.
5. Make a valley fold on the line ⑤ in two directions, so that the whole thing forms a W shape.
6. Fold the squares (4 places) of ⑥ inward, making mountain folds and creases on both sides.
7. Cut out the fins a, b, and c.
8. Apply glue to the "⑦Glue a" and "⑦Glue b" parts, and attach the fins to "⑦Attach a" and "⑦Attach b" respectively.
9. Attach the fins to "⑦Attach a" and "⑦Attach b" respectively.
10. Fold fin c at the line, apply glue to part "⑧Glue C", and attach it to part "⑧Attach c↑" behind the eye from the back.